



USB SQE 55 DRAWING RELEASE

We are very excited to release the V3 set of US Smart Building (USB) drawing sets. The Smart Building has a number of design enhancements new to the Wendy's fleet of restaurants.

Some of these design enhancements are:

- Blade lighting slip sheet added. (Test letter required, call Manager of Design)
- Awning design updated
- Urinal added in Men's Restroom.
- Signature Red Blade with fireplace and TV.
- Large variety of seating types
- New community table design.
- Single use restrooms c/w baby change stations in each restroom.
- New single line DSG with integrated chicken grill.
- New sandwich station design.
- Area for future Ware wash added.
- Standardization of the core kitchen layout
- Foundation design updated
- IFS panel (integrated electrical panel) with updated controls.
- Integrated ICS box with Dry Storage, Cooler and Freezer.
- Office Door and wall added. (door optional).
- IFS panel curb detail changed
- Electrical & control panel updated

NOTE: To access the US Smart Building CAD files, the Franchisee must apply to participate in an Early Adaptor Program (EAP) by contacting their Manager of Design. There is no cost to participate in the EAP.

Contact Information

Wendy's Restaurant Support Center

Trevor Wright **USB PROGRAM LEAD**
Manager of Design - West and Canada

614-764-6855

trevor.wright@wendys.com

Gregg Soltis

Manager of Design - South Region

614-764-3244

gregg.soltis@wendys.com

Barry Baughman

Manager of Design - North Region

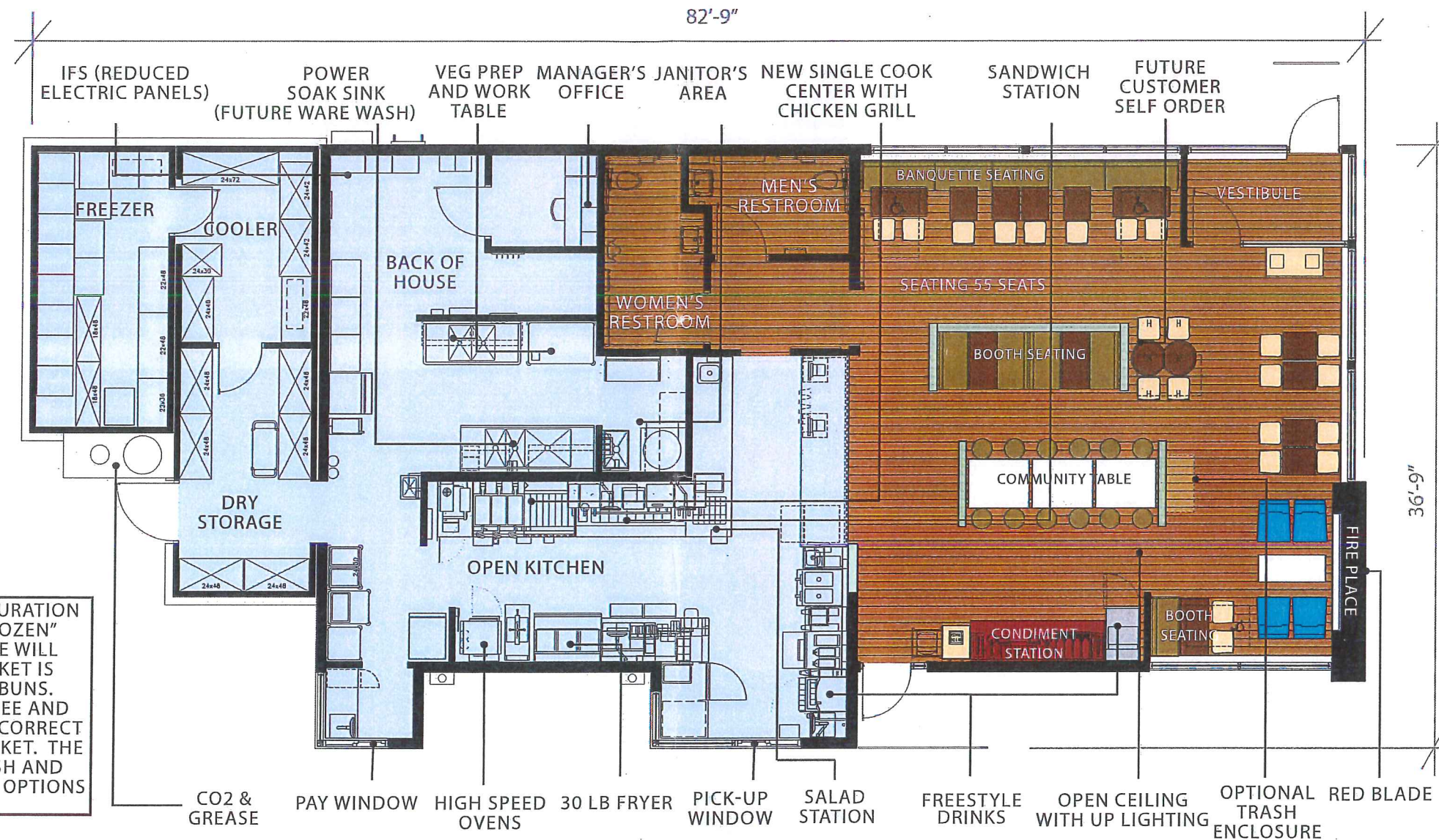
614-766-3770

barry.baughman@wendys.com



SQE 55

SQE 55 SUMMARY



NOTE: ICS BOX CONFIGURATION SHOWN IS FOR A "FROZEN" MARKET, ICS BOX SIZE WILL CHANGE IF THE MARKET IS SERVICED BY FRESH BUNS. ARCHITECT, FRANCHISEE AND CM TO DETERMINE THE CORRECT ICS BOX FOR THEIR MARKET. THE CD'S HAVE BOTH FRESH AND FROZEN ICS BOX SIZING OPTIONS AVAILABLE.



View towards POS



View toward dining area



View toward fire place



SQE 55

U.S. SMART BUILDING

BUILDING AREA

2,479SF total footprint (Fresh market)

2,562SF total footprint (Frozen market)

992SF dining / customer service

1,023SF kitchen / prep

149SF restrooms

315SF freezer / cooler / storage (Fresh market)

398SF freezer / cooler / storage (Frozen market)

DINING CAPACITY

55 total seats, excludes patio

19 total table tops, includes community table

BUILDING CHARACTERISTICS

24'-0" blade height

17'-6" parapet height

4 exterior building signs

BUILDING FEATURES

Single Line

2016 High Efficiency HVAC E-Flex System

SITE PLANNING CHARACTERISTICS

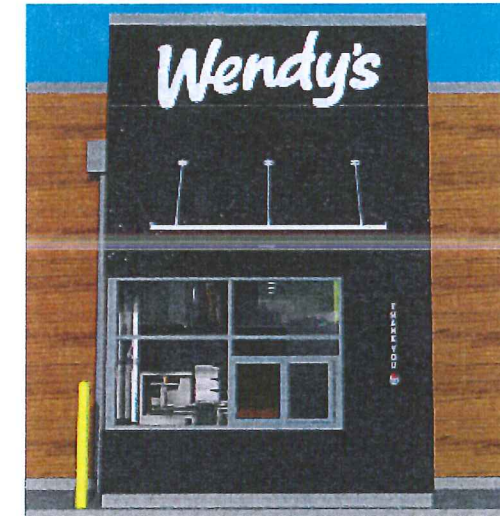
2 curb cuts with full circulation around the building

11 car drive-thru stack

450SF patio (12'x24' min.) with 12 seats (3 table tops)

Accessible route from public walk

Site lighting to achieve 4-6FC avg. (2FC min.)



SQE 55 SUMMARY



EXTERIOR DESIGN ELEMENTS



SIGNATURE RED BLADE

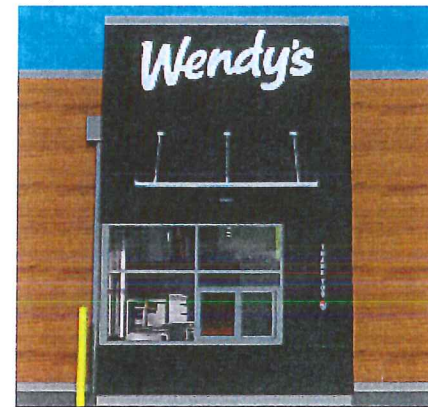
Red Blade positioned on the front left side of the building, with white Wendy's logo and cameo. Aluminum storefront glazing with high windows. Out door Patio seating with umbrellas provide a special feature.

Red Blade material is Nichiha fiber cement. Color: Blaze PPG 333-7



WENDY'S CAMEO

60" LED cameo framed on the side elevation provides an eye catching display for oncoming traffic.



GRAY PUW BLADE

Gray color Pick-Up window Blade with white Wendy's logo. New aluminum awning supported with wire cables and down light fixture.

Gray Blade material is Nichiha fiber board cement. Color: Knight Armor PPG 1001-6



DRIVE-THRU AWNING

The pre-fab powder coated drive-thru canopies have been slimmed and simplified, providing a perfect balance between form and function.

INTERIOR DESIGN ELEMENTS



HIGH OPEN CEILING

The dinig room has high open ceilings surrounded by glass and aluminum storefront. Interior lighting provides ambient uplighting that enhances the dining experience.



WENDY'S MURAL

Integration of Wendy's logo and LED accent lighting to make an impactful marketing statement.



COMMUNITY TABLE

The dining room furniture includes a new community wood table. The SQE 55 community table seats 12. The red fire place and TV adds to the dining room experience.



TECHNOLOGY

Introduction of the Customer Self Ordering (CSO) Front and center as customers enter the restaurant.

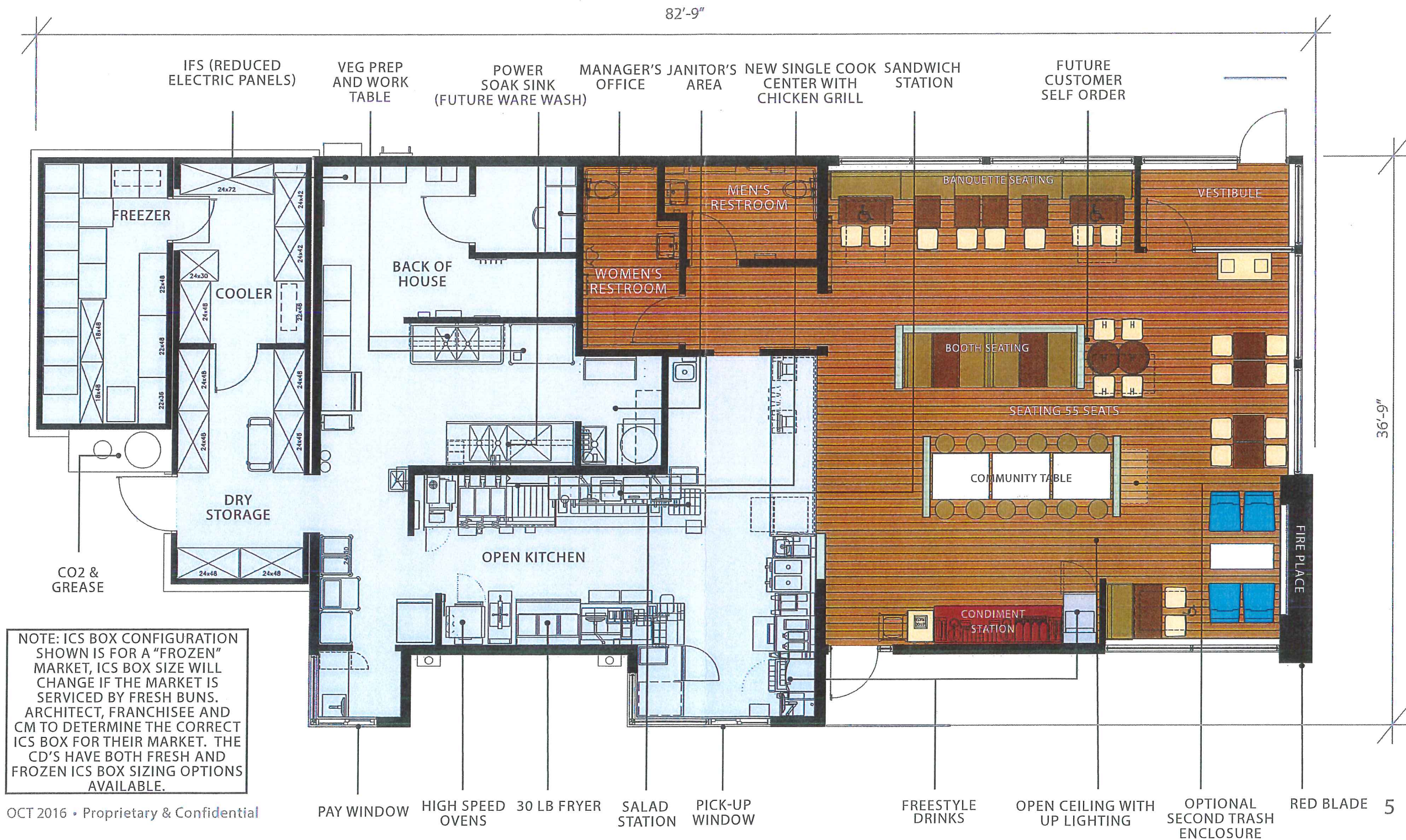


USB SQE 55 COVER SHEET





USB SQE 55 SEATING LAYOUT



- ### EXTERIOR FINISHES LEGEND
- NOTE: REFER TO SHEET A6.1 FOR SPECIFICATIONS OF EXTERIOR MATERIALS AND FINISHES.
- (BL-1) PLASTIC BOLLARD SLEEVE
 - (NP-1) FIBER CEMENT WALL PANEL (BASIS OF DESIGN - NICHHA VINTAGE WOOD SERIES - CEDAR)
 - (NP-2) FIBER CEMENT WALL PANEL (BASIS OF DESIGN - NICHHA ILLUMINATION SERIES - BLAZE)
 - (NP-3) FIBER CEMENT WALL PANEL (BASIS OF DESIGN - NICHHA ILLUMINATION SERIES - KNIGHTS ARMOR)
 - (M-2) CORRUGATED METAL PANEL (ANODIC CLEAR)
 - (M-4) PARAPET CAP (ANODIC CLEAR)
 - (M-5) METAL COPING (RED)
 - (SF-5) ALUMINUM STOREFRONT SYSTEM
 - (ACM-4) MODULAR SOFFIT / FASCIA
 - (PUW) PICKUP WINDOW
 - (PEX-2) PAINT (COLOR: WENDY'S EXTERIOR RED)
 - (PEX-5) PAINT (COLOR: WENDY'S DARK BRONZE - COOLER BOX ONLY)

SITE NUMBER: 12059
 BASE MODEL: USB SQE 55 V3
 ASSET TYPE: FRANCHISE
 CLASSIFICATION: NEW
 OWNER: CARLISLE CORPORATION
 BASE VERSION: XXXXXXXX
 UPGRADE CLASSIFICATION: FRANCHISE NEW BUILD
 PROJECT YEAR: 2017
 FURNITURE PACKAGE: 2016 V3
 DRAWING RELEASE: MAR 2017

Project No. **17-192**

snidesign

ARCHITECTS

Results!

Bardlow-Exalton Building
 1449 Bardlow Rd., Suite 200
 Louisville, Kentucky 40204
 (502) 456-5011 (502) 456-4511 (fax)

Wendy's

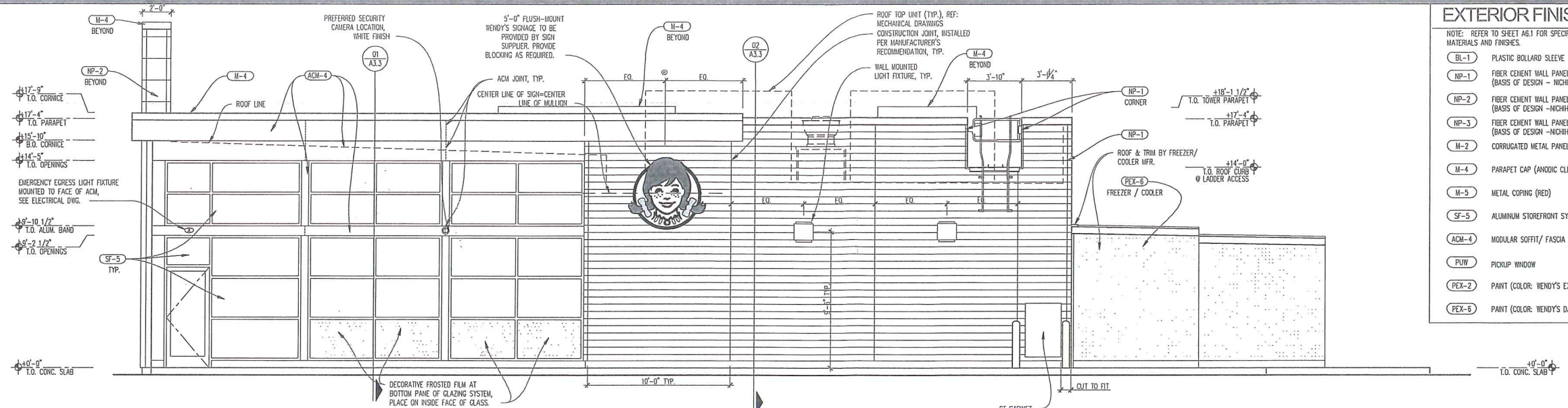
OAKLAND, TN.

REV.	DATE	DESCRIPTION

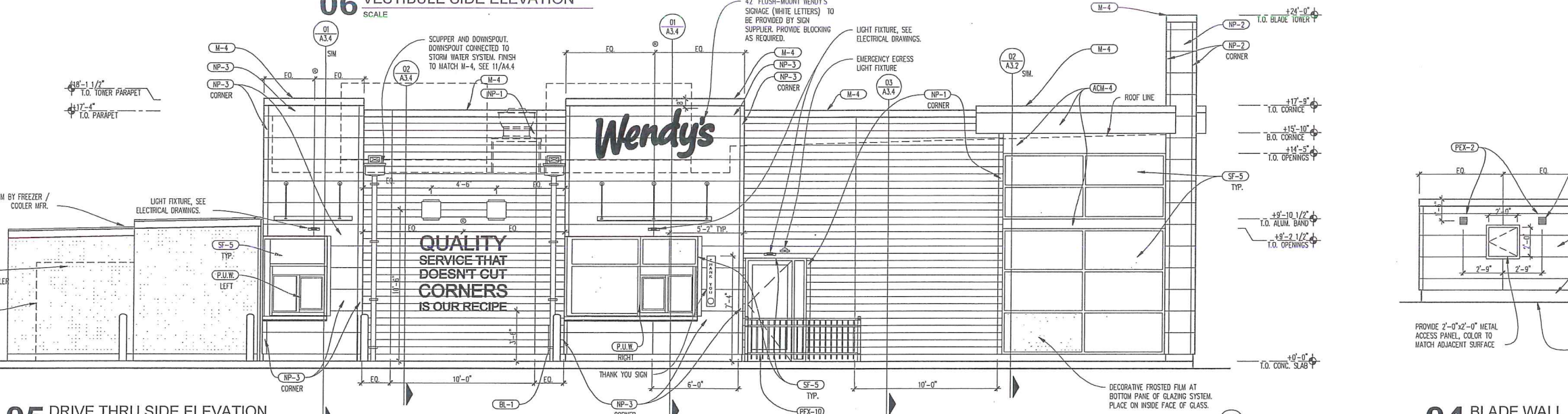
ISSUE DATE: AUGUST 15, 2017
 PROJECT NUMBER: 12059
 DRAWN BY: KEN BROVYN
 CHECKED BY: KEN BROVYN

SHEET NAME
 EXTERIOR ELEVATIONS

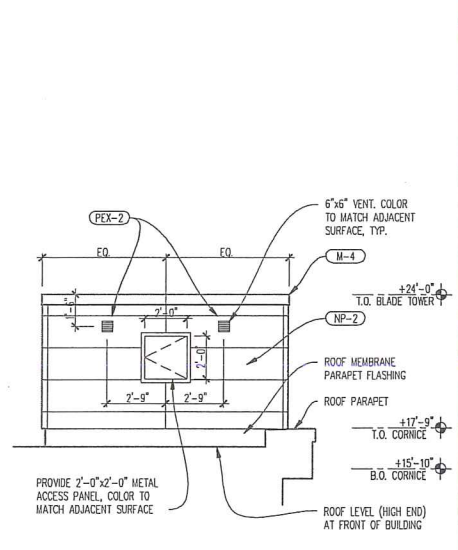
SHEET NUMBER
A2.1



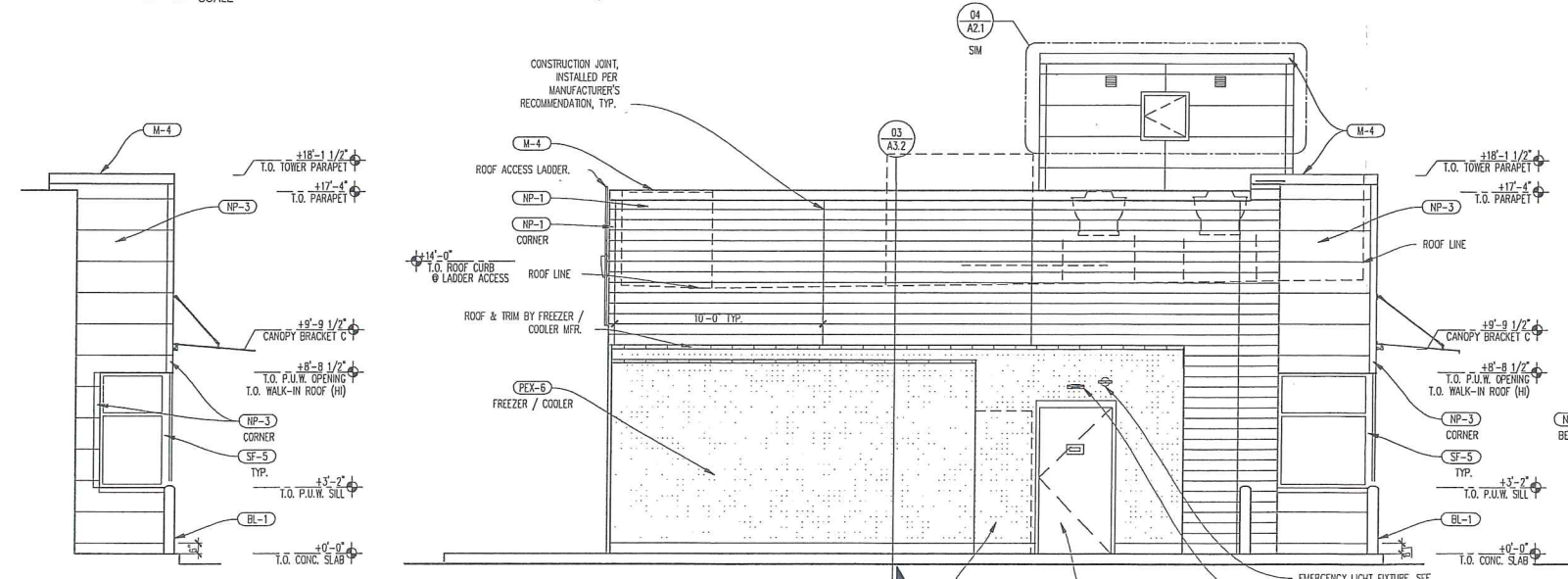
06 VESTIBULE SIDE ELEVATION
 SCALE



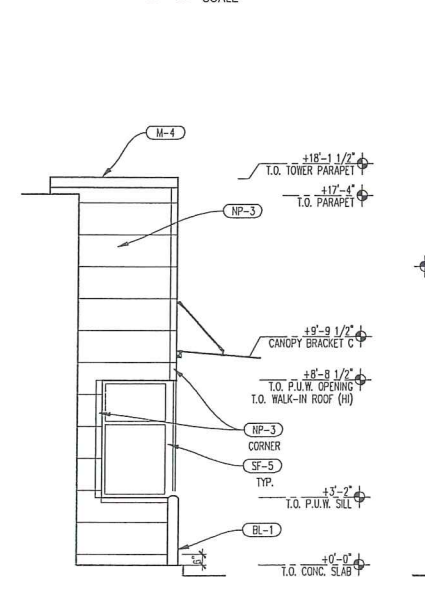
05 DRIVE THRU SIDE ELEVATION
 SCALE



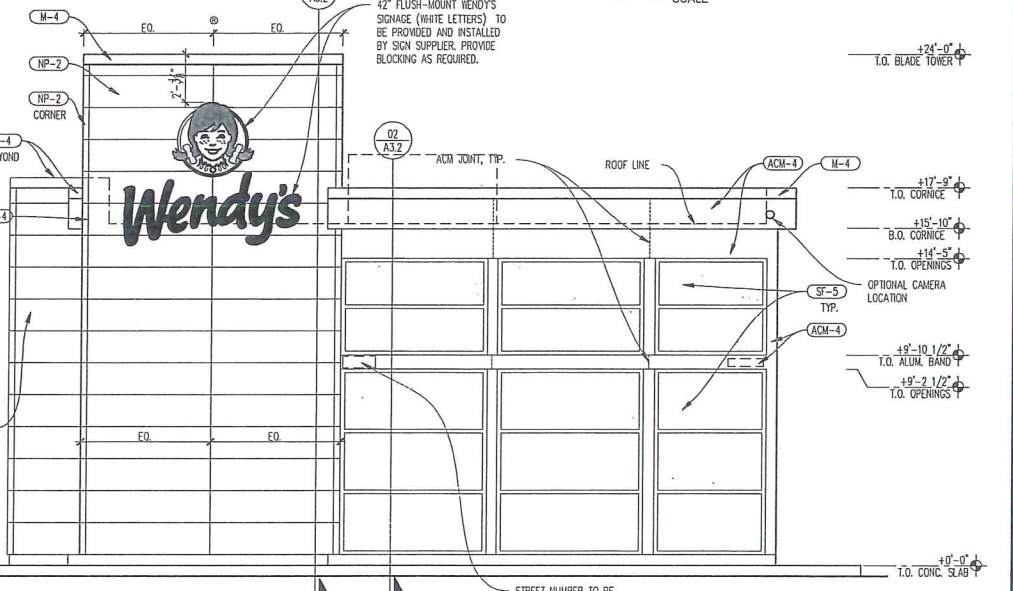
04 BLADE WALL DETAIL
 SCALE



02 REAR ELEVATION
 SCALE



03 REAR DRIVE THRU ELEVATION
 SCALE

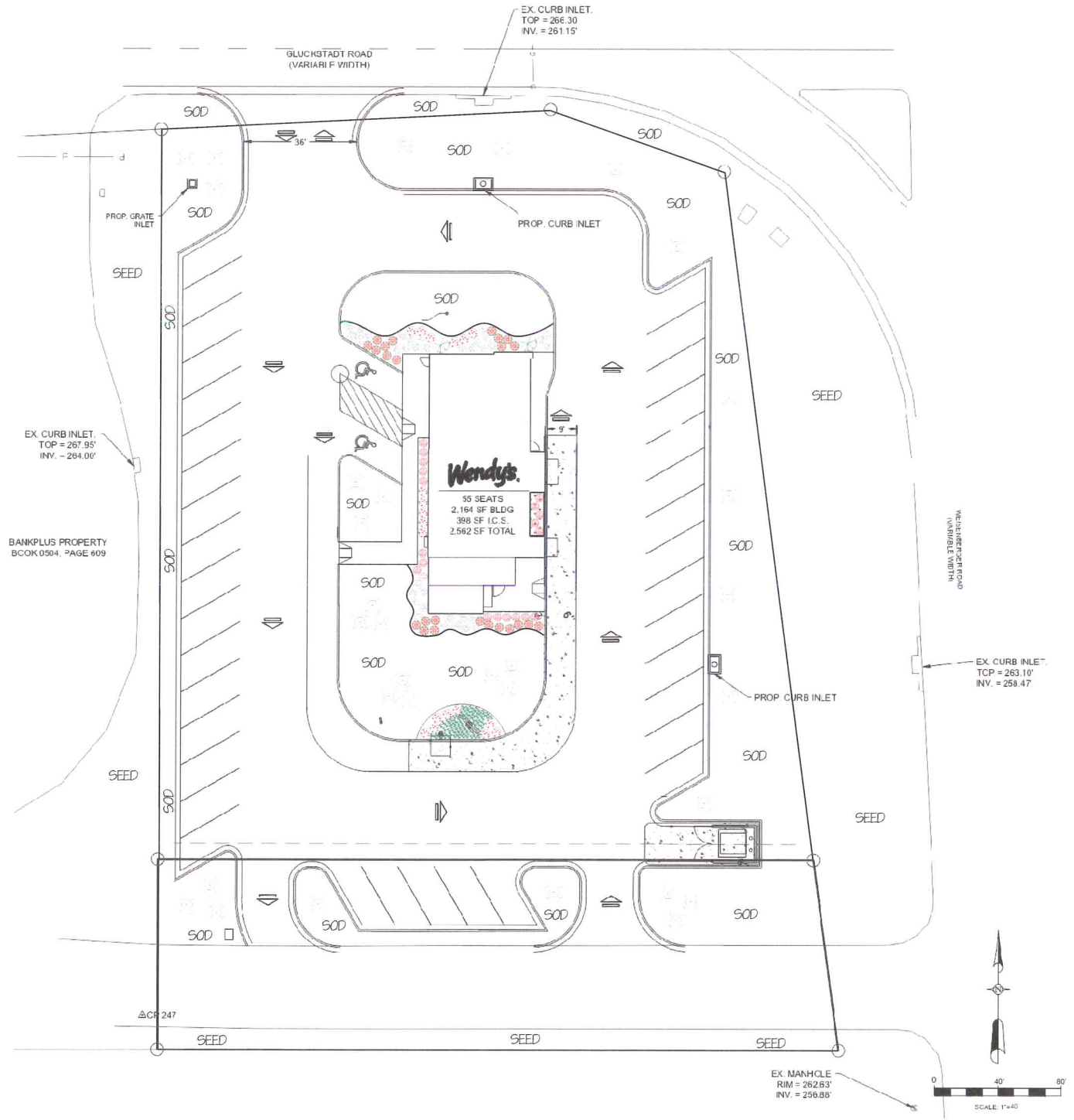


01 FRONT ELEVATION
 SCALE

8/8/2017, 6:09 PM, K:\Project\17-192 Wendy's Oakland TN\Drawings\sheet10_SQE_A2_1_Exterior Elevations.dwg, KenB

LEGEND

COMMON NAME	QTY	SIZE
FLOWER, PERENNIAL LIRIOPE, BIG BLUE	77	1 GAL.
SHRUB, DECIDUOUS ROSE, KNOCKOUT	19	3 GAL.
SHRUB, EVERGREEN BROADLEAF BURGUNDY LOROPETALUM	24	3 GAL.
CLEYERA	19	3 GAL.
INDIAN HAWTHORNE	36	3 GAL.
SHRUB, EVERGREEN CONIFER ARBOVITAE	2	15 GAL.
TREE, DECIDUOUS CRAPEMYRTLE	32	15 GAL.



REVISIONS		
NO.	DATE	DESCRIPTION

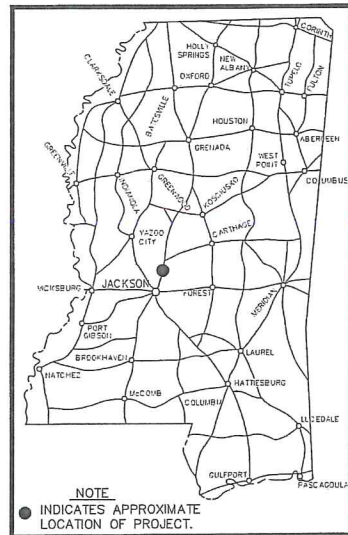
WENDY'S
NEW BUILD
MADISON COUNTY, MISSISSIPPI

Landscape Plan

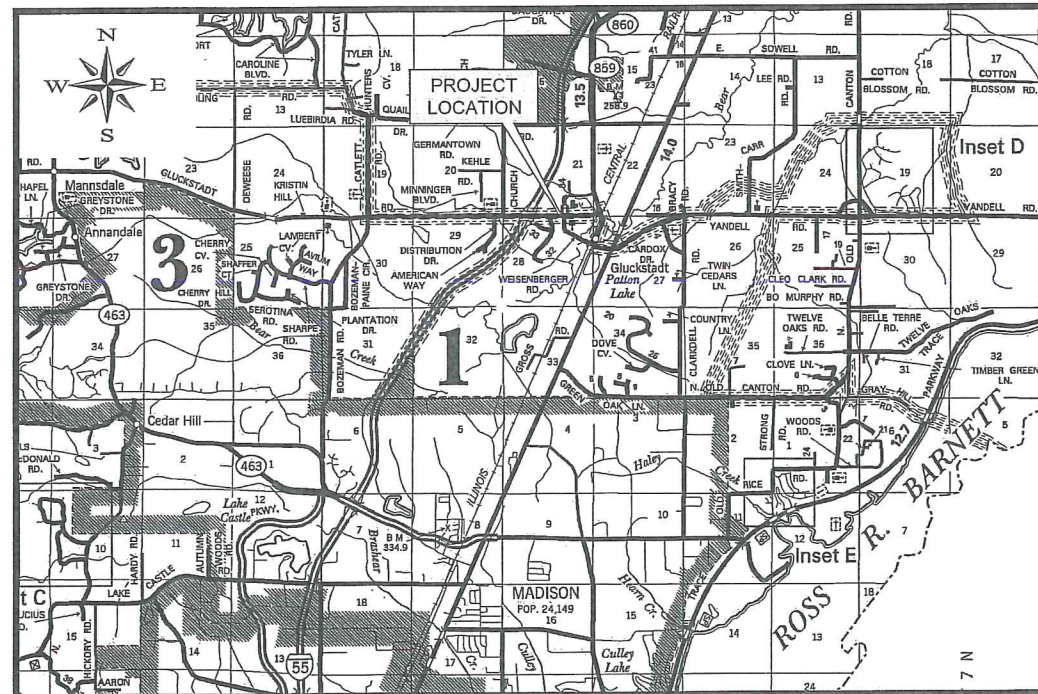
DRAWN BY:
CHECK BY:
SCALE: 1" = 20'
DATE:
PROJECT NO. C-075-13-17

SHEET NO.

CONSTRUCTION PLANS
FOR
WENDY'S SITE #12175
NEW BUILD
1243 GLUCKSTADT ROAD
MADISON COUNTY, MISSISSIPPI
NOVEMBER 2017



LOCATION MAP



VICINITY MAP

SCALE: 1" = 5000'

SHEET INDEX	
SHEET NO.	TITLE
C-1.0	COVER SHEET
C-1.1	LEGEND, ABBREVIATIONS AND GENERAL NOTES
C-2.1	SITE PLAN
C-2.2	GRADING AND DRAINAGE PLAN AND SPOT GRADES
C-2.3	EROSION CONTROL PLAN
C-3.1	TYPICAL PARKING, DRAINAGE, AND EROSION CONTROL DETAILS
C-3.2	PRE-CAST CURB INLET DETAILS
C-3.3	TYPICAL WATER DETAILS
C-3.4	TYPICAL SANITARY SEWER DETAILS



12/20/2017



**MENDROP
ENGINEERING RESOURCES**

854 WILSON DRIVE, SUITE A
RIDGELAND, MS 39157
TEL 601-899-5158
FAX 601-899-5110

NOTICE TO THE DRAWING HOLDER

MENDROP ENGINEERING RESOURCES, LLC, HEREINAFTER REFERRED TO AS THE ENGINEER, HAS PREPARED AND FURNISHED THESE CONSTRUCTION PLANS TO THE OWNER FOR USE ON THIS PROJECT ONLY. THESE PLANS SHOULD NOT BE USED ON EXTENSIONS OF THIS PROJECT OR ON ANY OTHER PROJECT. ANY REUSE OF THESE PLANS, WITHOUT WRITTEN VERIFICATION OR ADAPTATION BY THE ENGINEER, SHALL BE AT THE REUSER'S SOLE RISK AND THE REUSER SHALL INDEMNIFY AND HOLD HARMLESS THE ENGINEER FROM ALL CLAIMS, DAMAGES, LOSSES, AND EXPENSES, INCLUDING ATTORNEY'S FEES ARISING OUT OF OR RESULTING THEREFROM.

SUBMITTALS			
NO.	DATE	DESCRIPTION	BY
1	12/18/2017	INITIAL SUBMITTAL FOR REVIEW	BG
2	12/20/2017	SUBMITTED FOR COUNTY APPROVAL	BG

LEGEND

	SUBJECT/PROPERTY BOUNDARY
	PROP. RIGHT OF WAY
	PROPERTY LINE
	PROP. CENTERLINE
	PROP. EASEMENT
	PROP. SILT FENCE
	PROP. DITCH OR SWALE
	PROP. CONTOUR MAJOR
	PROP. CONTOUR MINOR
	PROP. SETBACKS
	PROP. CONSTRUCTION LIMITS/DAYLIGHT LINES
	EX. EDGE OF PAVEMENT
	EX. MINOR CONTOUR
	EX. MAJOR CONTOUR
	PROP. DRAINAGE PIPE
	PROP. WATER LINE (WITH SIZE)
	PROP. GRAVITY SEWER MAIN (WITH SIZE)
	EX. WATER MAIN (WITH SIZE)
	EX. GRAVITY SEWER MAIN (WITH SIZE)
	EX. SANITARY SEWER SERVICE
	EX. GAS LINE (WITH SIZE)
	EX. OVERHEAD POWERLINE
	PROP. GRATE INLET
	EX. SEWER MANHOLE
	EX. FIRE HYDRANT
	EX. WATER VALVE
	EX. POWER POLE
	CURB INLET
	HORIZONTAL CONTROL POINT
	LIGHT POLE
	TRAFFIC FLOW ARROW
	DRAINAGE FLOW ARROW
	BENCHMARK / VERTICAL CONTROL POINT
	HANDICAP
	IRON PIN/PROPERTY CORNER
	EX. TELEPHONE PEDISTAL
	EX. WATER METER

ABBREVIATIONS

EX	EXISTING
PROP.	PROPOSED
PM	PLAN MEASURE
AH	ABSORBED HAUL
CL	CLASS
GP	GROUP
AEA	AVERAGE END AREA
FM	FINAL MEASURE
FME	FINAL MEASURE EMBANKMENT
GA	GAUGE
CONT.	CONTINUOUS
EMH	EXISTING MANHOLE
PMH	PROPOSED MANHOLE
CP	CONTROL POINT
CMP	CORRUGATED METAL PIPE
TYP.	TYPICAL
O.C.	ON CENTER
E.W.	EACH WAY
T.O.C.	TOP OF CURB
INV.	INVERT
ELEV.	ELEVATION
REQ'D	REQUIRED
LS	LUMP SUM
AC	ACRES
CY	CUBIC YARDS
LF	LINEAR FEET
EA	EACH
LB	POUNDS
VF	VERTICAL FOOT
STA	STATION
PC	POINT OF CURVATURE
PRC	POINT OF REVERSE CURVATURE
WW	WATER VALVE
HYD	HYDRANT
PT	POINT OF TAGENCY
LT	LEFT
RT	RIGHT
V.C.	VERTICAL CURVE
N	NORTHING
E	EASTING
US	UPSTREAM
DS	DOWNSTREAM
FL	FLOW LINE
RCP	REINFORCED CONCRETE PIPE
RCAP	REINFORCED CONCRETE ARCH PIPE
SY	SQUARE YARD
SF	SQUARE FOOT
PC-1	PIPE COLLAR
R.O.W.	RIGHT-OF-WAY
O/S	OFFSET
BC-1	BRANCH CONNECTION
F.B.	FLAT BOTTOM

GENERAL NOTES:

- BEFORE COMMENCING ANY ACTIVITY UNDER OR PERTAINING TO THIS CONTRACT, THE CONTRACTOR SHALL:
 - OBTAIN ALL BUILDING AND CONSTRUCTION PERMITS AS REQUIRED BY PERTINENT REGULATORY AND GOVERNMENTAL AGENCIES;
 - CONTACT MADISON COUNTY INSPECTION OFFICE;
 - VERIFY THE LOCATION OF EXISTING UTILITIES ON THE PROJECT SITE A MINIMUM OF 72 HOURS BEFORE CONSTRUCTION OPERATIONS BEGIN;
- AT ALL TIMES, THE CONTRACTOR SHALL EMPLOY ADEQUATE EROSION AND SEDIMENTATION CONTROL MEASURES TO PREVENT DAMAGE TO THE PROPERTY, ADJACENT PROPERTIES, PUBLIC RIGHTS-OF-WAY, AND PUBLIC OR PRIVATE DRAINAGE SYSTEMS. ALL NEWLY CUT AND/OR FILLED AREAS LACKING ADEQUATE VEGETATION SHALL BE SEEDED AND/OR SODDED AS REQUIRED TO EFFECTIVELY PREVENT SOIL EROSION PER MDEQ REGULATIONS.
- THE CONTRACTOR MUST HAVE WRITTEN APPROVAL FROM MADISON COUNTY BEFORE ANY CHANGE IN THE DESIGN IS MADE.
- AT NO TIME SHALL THE CONTRACTOR ENCR OACH UPON OR CAUSE DISRUPTION TO TRAFFIC FLOW ON ADJACENT PUBLIC RIGHTS-OF-WAY WITHOUT SECURING THE PROPER PERMITS PRIOR TO COMMENCING OPERATIONS. THE CONTRACTOR SHALL ERECT THE PROPER TRAFFIC CONTROL DEVICES PER THE MANUAL OF UNIFORM TRAFFIC CONTROL DEVICES, LATEST EDITION, AND SHALL PROTECT THE PUBLIC FROM HAZARD OR INJURY BY ERECTING BARRICADES WHERE APPROPRIATE. THE CONTRACTOR SHALL NOT ENTER NOR CAUSE DAMAGE TO ANY ADJACENT PROPERTIES WITHOUT WRITTEN PERMISSION FROM SAID PROPERTY OWNERS.
- UNLESS NOTED OTHERWISE, ALL SITE CONCRETE SHALL BE 4,000 PSI.
- ANY EXISTING UTILITIES REQUIRING RELOCATION SHALL BE THE CONTRACTOR'S RESPONSIBILITY. THE CONTRACTOR IS RESPONSIBLE FOR MAINTAINING WORKING UTILITY SERVICES TO ADJACENT BUILDINGS DURING DEMOLITION AND CONSTRUCTION. COORDINATE ALL PLANNED SERVICE OUTAGES OR EMERGENCIES WITH THE OWNER. ANY UTILITY DAMAGED BY CONSTRUCTION ACTIVITIES SHALL BE REPLACED AND RESTORED TO ITS ORIGINAL CONDITION AT NO ADDITIONAL CONST TO THE OWNER.
- CONSTRUCTION STAKING IS THE RESPONSIBILITY OF THE CONTRACTOR.
- CONTRACTOR SHALL COMPLY WITH ALL APPLICABLE LOCAL AND STATE REQUIREMENTS INCLUDING THE LOCAL NOISE ORDINANCE.
- ANY FENCING, SIDEWALK, CURB AND GUTTER, CURB CUT, ETC., DAMAGED BY CONSTRUCTION ACTIVITIES SHALL BE REPLACED AND RESTORED TO ITS ORIGINAL CONDITION AT NO ADDITIONAL COST TO THE OWNER.
- ALL UTILITY LINES ENTERING THE BUILDING SHALL BE SEALED TO PREVENT MIGRATION OF SURFACE AND SUBSURFACE WATER AND SUBSEQUENT WETTING OF THE SUBGRADE SOILS. THE UTILITY LINES SHALL BE SEALED FROM THE BUILDING FOUNDATION TO A MINIMUM OF 3 FEET OUTSIDE THE BUILDING FOUNDATION.
- CONTRACTOR SHALL FIELD VERIFY LOCATION OF EXIST NATURAL GAS, WATER, AND SEWER LINES WHERE CROSSING PROPOSED UTILITIES' CONSTRUCTION. CONTRACTOR SHALL PROVIDE ELEVATIONS OF EXIST UTILITIES TO THE ENGINEER TO VERIFY ADEQUATE CLEARANCE.
- CONTRACTOR SHALL SUPPLY AND INSTALL ALL ITEMS AND PERFORM ALL WORK NOT COVERED BY UTILITY COMPANIES. VERIFY INSTALLATION PROCEDURE WITH UTILITY COMPANY.
- CONTRACTOR SHALL REMOVE AND REPAIR PAVEMENT AS REQUIRED FOR UTILITY CONSTRUCTION INCLUDING BUT NOT LIMITED TO: IRRIGATION SLEEVES, SITE LIGHTING, CONDUITS, WATER LINES, SANITARY SEWER LINES, STORM DRAINAGE LINES, ETC. CONTRACTOR HAS OPTION TO BORE CONDUITS.


12/21/2017 2:14:14 PM

REVISIONS			
NO.	DATE	DESCRIPTION	BY

WENDY'S SITE #12175
NEW BUILD
1243 GLUCKSTADT ROAD
MADISON COUNTY, MISSISSIPPI

LEGEND, ABBREVIATIONS
AND GENERAL NOTES

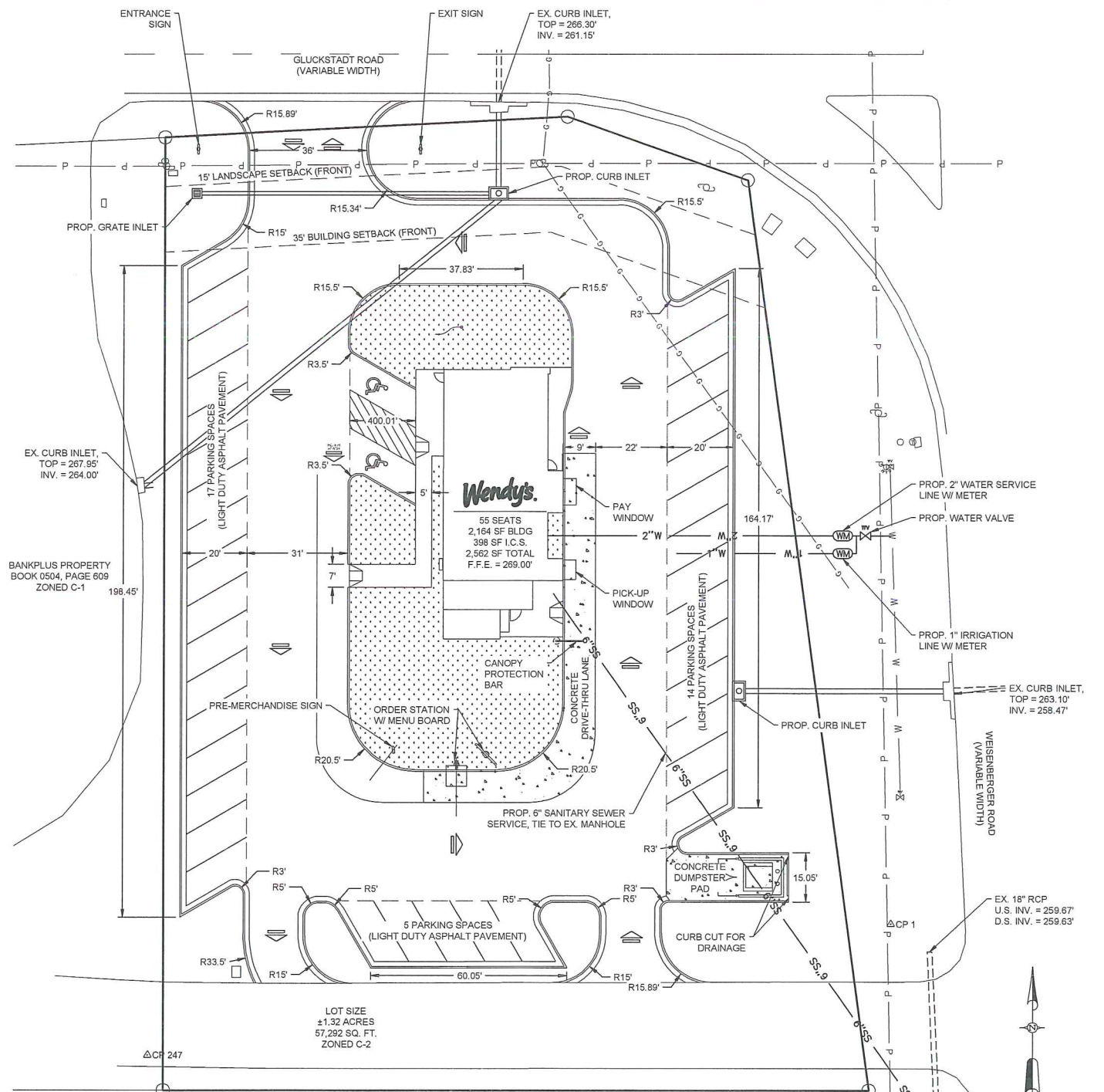
PATH: I:\Land Projects\IC-075-13-17Dwg\IC-075-13-17_Cover.dwg



MENDROP
 ENGINEERING RESOURCES
 854 WILSON DRIVE
 SUITE A
 RIDGELAND, MS 39157
 TEL (601) 899-5158
 FAX (601) 899-5110

DRAWN BY: B. GRIFFIN	SHEET NO. C-1.1
CHECK BY: B. MENDROP	
SCALE: NONE	
DATE: NOVEMBER 2017	
PROJECT NO.: C-075-13-17	

CONTROL SCHEDULE			
NAME	NORTHING	EASTING	ELEVATION
CP 1	1097157.2500'	2370080.4680'	262.67'
CP 247	1097117.1860'	2369852.9270'	268.76'



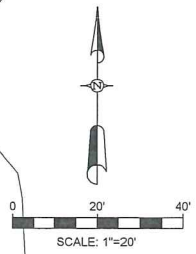
NOTE: REAR AND SIDE SETBACKS NOT REQUIRED PER MADISON COUNTY ZONING ORDINANCES.

DESIGN NOTES:
BUILDING AREA = 2,164 SQ. FT.
PARKING PROVIDED = 38 SPACES (2 HANDICAP)

PAVEMENT NOTES: UNLESS NOTED OTHERWISE, PARKING LOT SHALL BE HEAVY DUTY PAVEMENT DESIGN. SEE SHEET C-3.1 FOR DETAILS.

LOT AREA = 57,292 SQ. FT.
BUILDABLE AREA = 3,786'

EX. MANHOLE
RIM = 262.63'
INV. = 256.88'



REVISIONS		
NO.	DATE	DESCRIPTION

WENDY'S SITE #12175
NEW BUILD
1243 GLUCKSTADT ROAD
MADISON COUNTY, MISSISSIPPI

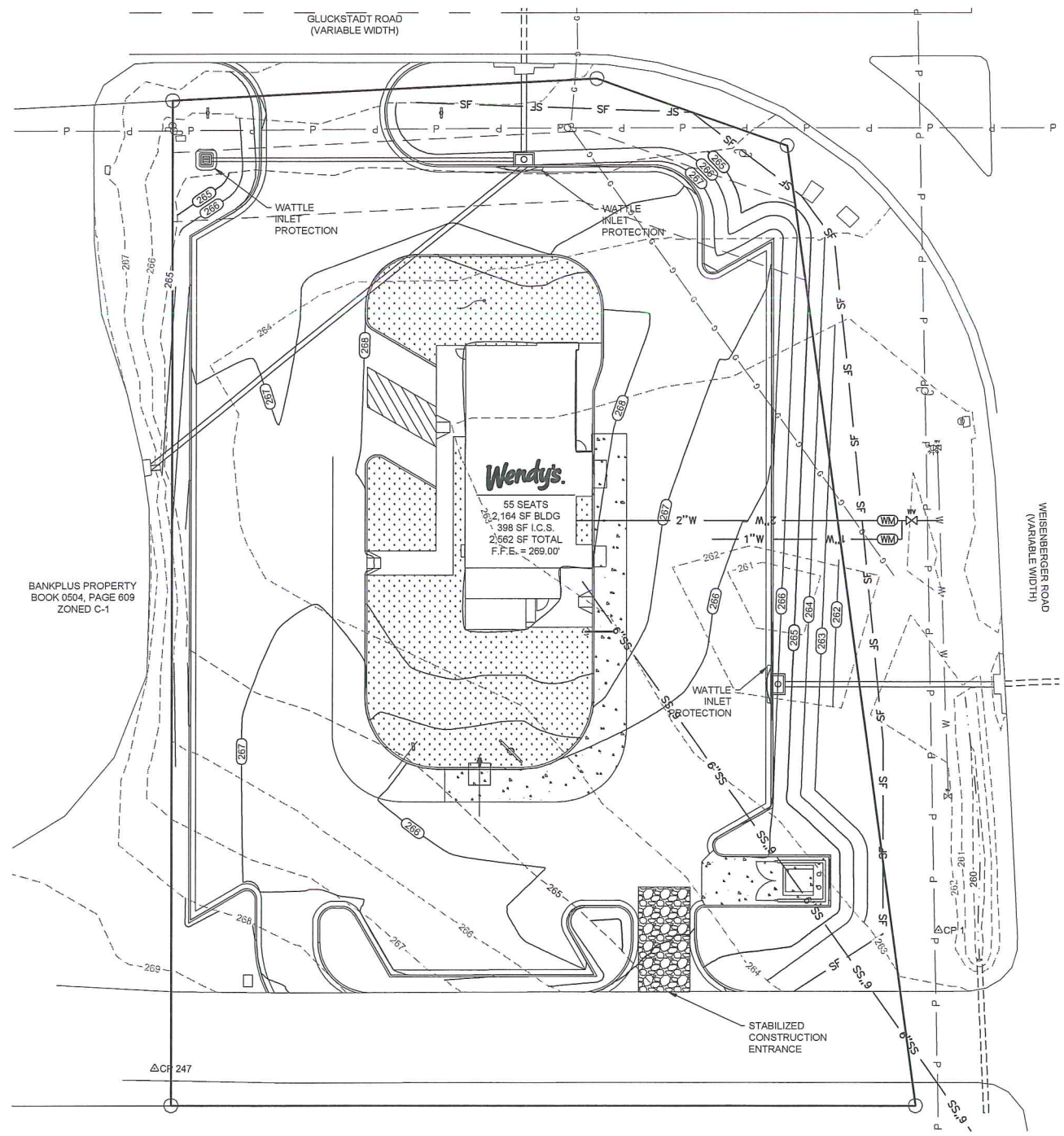
SITE PLAN
PATH: I:\Land Projects\IC-075-13-17\Dwg\IC-075-13-17.dwg

MENDROP
ENGINEERING RESOURCES
854 WILSON DRIVE
SUITE A
RIDGELAND, MS 39157
TEL (601) 899-5158
FAX (601) 899-5110

DRAWN BY: B. GRIFFIN
CHECK BY: B. MENDROP
SCALE: 1" = 20'
DATE: NOVEMBER 2017
PROJECT NO.: C-075-13-17

SHEET NO.
C-2.1

12/21/2017 2:14:30 PM



REVISIONS			
NO.	DATE	DESCRIPTION	BY

WENDY'S SITE #12175
NEW BUILD
1243 GLUCKSTADT ROAD
MADISON COUNTY, MISSISSIPPI

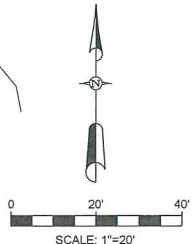
EROSION CONTROL PLAN
 PATH: I:\Land Projects\IC-075-13-17\DWG\IC-075-13-17.dwg



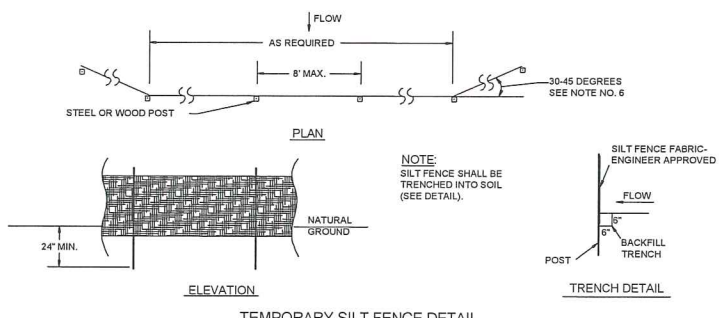
MENDROP
 ENGINEERING RESOURCES
 854 WILSON DRIVE
 SUITE A
 RIDGELAND, MS 39157
 TEL (601) 899-5158
 FAX (601) 899-5110

DRAWN BY: B. GRIFFIN
 CHECK BY: B. MENDROP
 SCALE: 1" = 20'
 DATE: NOVEMBER 2017
 PROJECT NO.: C-075-13-17

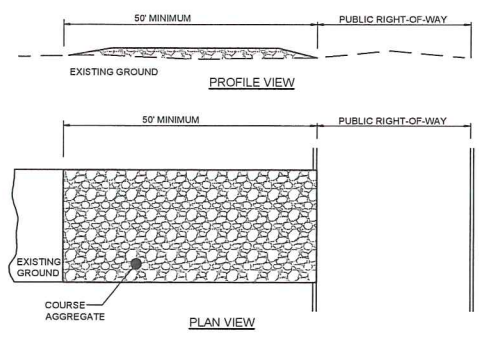
SHEET NO.
C-2.3



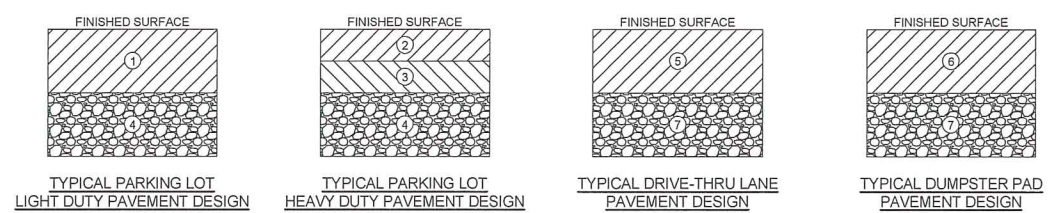
12/21/2017 2:16:44 PM



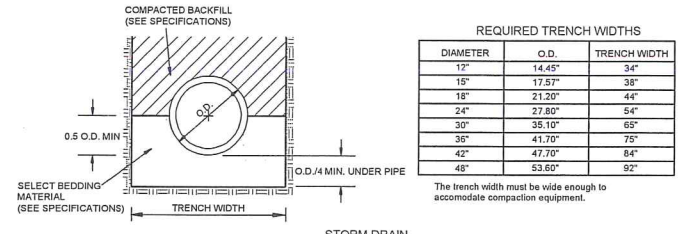
- SILT FENCING NOTES:**
- SILT FENCE OR HAY BALE SEDIMENT BARRIER SHALL BE INSTALLED TO FILTER SEDIMENT FROM RUNOFF.
 - SEDIMENT BUILD-UP SHALL BE REMOVED WHEN SEDIMENT REACHES 1/2 THE ABOVE GROUND HEIGHT OF THE FENCE.
 - SILT FENCE SHALL BE LEFT IN PLACE UNTIL PERMANENT VEGETATION COVER IS ESTABLISHED.
 - AREAS DISTURBED AS A RESULT OF REMOVING THE SILT FENCE SHALL BE RESTABILIZED BY SEEDING ACCORDING TO THE REVEGETATION SPECIFICATIONS.
 - AREA BEHIND THE SILT FENCE IS LIMITED TO 1/4 ACRE PER 100 FEET OF SILT FENCE.
 - ON UPSLOPE INSTALLATIONS, BOTH ENDS OF THE SILT FENCE SHALL BE TURNED AND EXTENDED UPSLOPE.
 - SILT FENCES ARE TO BE USED IN MINOR SWALES WITH DRAINAGE AREAS OF LESS THAN 2 ACRES, AND NOT TO BE INSTALLED IN LIVE STREAMS.
 - MAXIMUM SLOPE LENGTH BEHIND SILT FENCE SHALL BE 100 FEET. 9. MAXIMUM SLOPE BEHIND SILT FENCE SHALL BE 2:1.



- CONSTRUCTION ENTRANCE NOTES:**
- SEPARATION GEOTEXTILE FABRIC FOR FULL WIDTH AND LENGTH OF EXIT.
 - GRADE TO PREVENT RUN-OFF FROM LEAVING SITE.
 - PROVIDE APPROPRIATE TRANSITION BETWEEN STABILIZED CONSTRUCTION ENTRANCE AND PUBLIC RIGHT-OF-WAY.



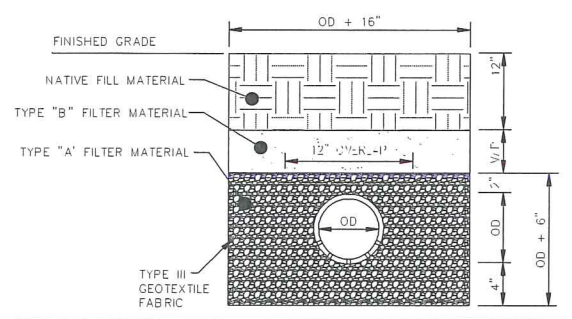
- 3" HOT BITUMINIOUS SURFACE COURSE (SC-1, TYPE 8) OR HMA, ST, 9.5MM MIX
 - 1.5" HOT BITUMINIOUS SURFACE COURSE (SC-1, TYPE 8) OR HMA, ST, 9.5MM MIX
 - 2.5" HOT BITUMINIOUS BINDER COURSE (BC-1, TYPE 6) OR HMA, ST, 19MM MIX
 - 6" CRUSHED Limestone (SIZE 610)
 - 6" FIBER REINFORCED CONCRETE PAVEMENT
 - 8" FIBER REINFORCED CONCRETE PAVEMENT
 - 4" CRUSHED Limestone (610 SIZE)
- NOTE: PAVEMENT DESIGN RECOMMENDATION PROVIDED BY GEOTECHNICAL ENGINEER. REFER TO GEOTECHNICAL REPORT FOR DETAILS.



- PIPE BEDDING AND INSTALLATION**
- MATERIALS**
- THERMOPLASTIC PIPE**
POLYETHYLENE PIPE SHALL CONFORM TO THE REQUIREMENTS OF AASHTO M 254, LATEST EDITION. DESIGNATION OF TYPE: TYPE S; THIS PIPE WILL HAVE A FULL CIRCULAR CROSS SECTION, WITH AN OUTER CORRUGATED PIPE WALL AND A SMOOTH INNER LINER.
- BEDDING MATERIAL AND STRUCTURAL BACKFILL**
BEDDING AND STRUCTURAL BACKFILL SHALL MEET THE REQUIREMENTS OF TABLE 1.
- 2. JOINTS**
JOINTS FOR THERMOPLASTIC PIPE SHALL MEET THE PERFORMANCE REQUIREMENTS OF SOILTIGHTNESS UNLESS WATERTIGHTNESS IS SPECIFIED. SUITABLE JOINTS CAN BE OBTAINED WITH THE FOLLOWING TYPES OF CONNECTIONS:
A) CORRUGATED BANDS (WITH OR WITHOUT GASKETS)
B) BELL AND SPIGOT PIPE ENDS (WITH OR WITHOUT GASKETS)
C) DOUBLE BELL COUPLINGS (WITH OR WITHOUT GASKETS)
- 3. INSTALLATION**
MINIMUM TRENCH WIDTHS SHALL MEET THE REQUIREMENTS OF TABLE 2. THE MIDDLE THIRD OF THE BEDDING MATERIAL UNDER THE PIPE SHOULD BE LOOSELY PLACED, WHILE THE REMAINDER SHALL BE COMPACTED TO A MINIMUM 90% OF MAXIMUM DENSITY PER AASHTO T 99. STRUCTURAL BACKFILL SHALL BE PLACED AND COMPACTED IN LAYERS NOT EXCEEDING AN 8 INCH LOOSE LIFT THICKNESS AND BROUGHT UP EVENLY ON BOTH SIDES OF THE PIPE TO AN ELEVATION NOT LESS THAN 12 INCHES ABOVE THE TOP OF THE PIPE. A MINIMUM COMPACTION LEVEL OF 90% STANDARD DENSITY PER AASHTO T 99 SHALL BE ACHIEVED.

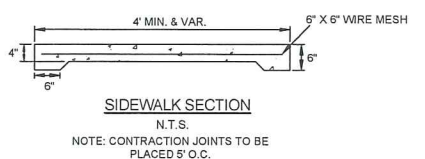
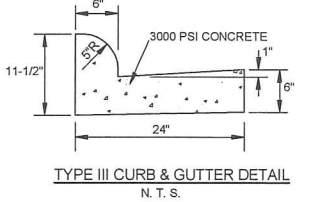
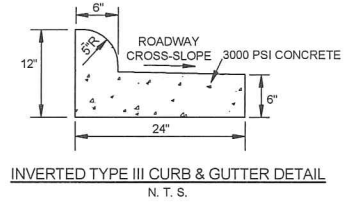
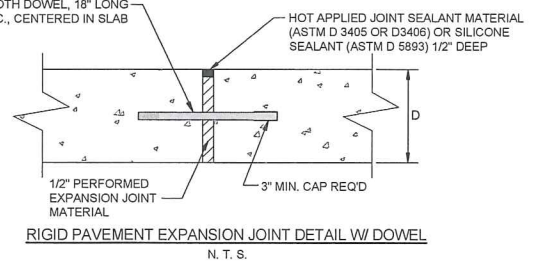
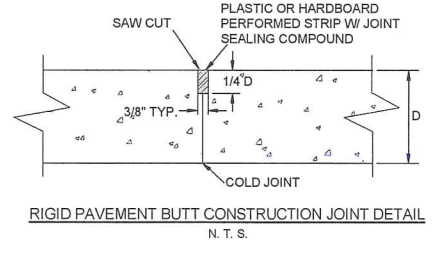
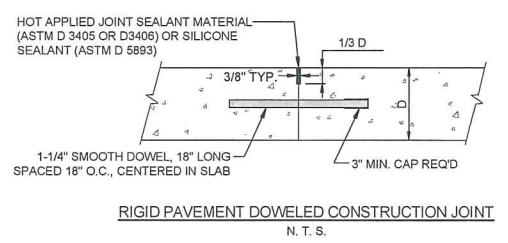
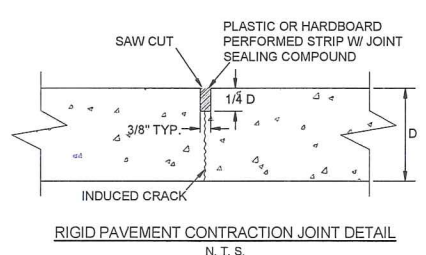
AASHTO GROUP CLASSIFICATION	A-1		A-3	A-2	
	A-1-a	A-1-b		A-2-4	A-2-5
SIEVE ANALYSIS, PERCENT PASSING:					
2.00 MM (NO. 10)	50 MAX	—	51 MIN	—	—
0.425 MM (NO. 40)	30 MAX	—	50 MAX	—	—
0.075 MM (NO. 200)	15 MAX	25 MAX	10 MAX	35 MAX	35 MAX
CHARACTERISTICS OF FRACTION PASSING 0.425 MM (NO. 40)					
LIQUID LIMIT	—	—	NP	40 MAX	41 MIN
PLASTICITY INDEX	8 MAX	—	—	10 MAX	10 MAX
USUAL TYPE OF SIGNIFICANT CONSTITUENT MATERIALS	STONE FRAGMENTS, GRAVEL AND SAND		FINE SAND	SILTY OR CLAYEY GRAVEL AND SAND	
MDOT GRANULAR MATERIAL DESIGNATION (SECTION 703.07)	CLASS 1A2, GROUP A	CLASS 3A4, GROUP A		CLASS 5A6, GROUP C	

HDPE PIPE BEDDING DETAILS



PIPE SIZE	T	K	TYPE "A" MATERIAL (yd ³ /ft)	TYPE "B" MATERIAL (yd ² /ft)	TYPE III GEOTEXTILE (yd ² /ft)	NATIVE FILL MATERIAL (yd ³ /ft)
6"	—	—	0.0638	0.0694	0.7593	0.0694
18"	1/2"	4"	0.099	0.130	1.193	—
24"	3/4"	2"	0.100	0.148	1.334	—
30"	1"	2"	0.124	0.167	1.513	—
36"	1 1/4"	2"	0.149	0.185	1.691	—
42"	1 1/2"	2"	0.176	0.204	1.869	—
48"	1 3/4"	2"	0.204	0.222	2.048	—

- * NOTE: yd³/ft = CUBIC YARD PER FOOT DEPTH OF MATERIAL PER FOOT LENGTH OF PIPE.
- UNDERDRAIN NOTES:**
- 6" OVERLAP SHALL BE REQUIRED AT THE END OF EACH ROLL OF TYPE III GEOTEXTILE.
 - TYPE A FILTER MATERIAL SHALL CONSIST OF COARSE AGGREGATE GRAVEL OR CRUSHED LIMESTONE UNLESS OTHERWISE DESIGNATED, AND SHALL MEET THE REQUIREMENTS FOR SIZE 7, 57, OR 67 COURSE AGGREGATE FOR PORTLAND CEMENT CONCRETE SET FORTH IN THE MISSISSIPPI STANDARD SPECIFICATIONS FOR ROAD AND BRIDGE CONSTRUCTION.
 - TYPE B FILTER MATERIAL SHALL CONSIST OF NATURAL OR MANUFACTURED LIMESTONE SAND, AND MEET THE REQUIREMENTS OF FINE AGGREGATE FOR PORTLAND CEMENT CONCRETE SET FORTH IN THE MISSISSIPPI STANDARD SPECIFICATIONS FOR ROAD AND BRIDGE CONSTRUCTION.
 - PVC PIPE USED FOR UNDERDRAINS SHALL CONFORM TO ASTM D 3034 FOR SDR 35.



REVISIONS			BY
NO.	DATE	DESCRIPTION	

WENDY'S SITE #12175
NEW BUILD
1243 GLUCKSTADT ROAD
MADISON COUNTY, MISSISSIPPI

TYPICAL PARKING, DRAINAGE,
AND EROSION CONTROL DETAILS

PATH: I:\Land Projects\IC-075-13-17\DWG\IC-075-13-17.dwg

MENDROP
ENGINEERING RESOURCES
854 WILSON DRIVE
SUITE A
RIDGELAND, MS 39157
TEL (601) 899-5158
FAX (601) 899-5110

DRAWN BY: B. GRIFFIN
CHECK BY: B. MENDROP
SCALE: NONE
DATE: NOVEMBER 2017
PROJECT NO.: C-075-13-17

SHEET NO.
C-3.1

12/21/2017 2:14:49 PM

GENERAL DATA													
SS-2 INLET SIZE	WALL THICKNESS	INSIDE DIMENSION		OUTSIDE DIMENSION		BASE HEIGHT	RISER HEIGHT	WEIGHTS					
		WT	IL	OW	OL			BOTTOM	BASE/RISER	INLET TOP	EXTENSION	EXTENSION TOP	
FEET	INCHES	INCHES	INCHES	INCHES	INCHES	3" INCREMENTS	B	R	LB	LB/FT	LB	LB	LB
3 X 5	5	36	60	46	70	24-54	18-48	1125	1114	1880	1865	1070	

3' x 5' WALL REINFORCEMENT (SQ. IN. PER LIN. FT.)												
DEPTH OF INSTALLATION	BASE		TOP RISER		INTERIOR RISER #1		INTERIOR RISER #2		INTERIOR RISER #3		INTERIOR RISER #4	
	AREA	LB/FT	AREA	LB/FT	AREA	LB/FT	AREA	LB/FT	AREA	LB/FT	AREA	LB/FT
0-8	0.30	36.969	0.24	29.575	-	-	-	-	-	-	-	-
0-12	0.60	78.867	0.24	29.575	0.60	78.867	-	-	-	-	-	-
0-16	0.88	110.005	0.24	29.575	0.60	78.867	0.74	95.338	-	-	-	-
0-20	1.18	139.340	0.24	29.575	0.60	78.867	0.74	95.338	1.06	124.672	-	-
0-24	1.44	176.008	0.24	29.575	0.60	78.867	0.74	95.338	1.06	124.672	1.20	146.673

CONCRETE QUANTITIES				
SS-2 INLET SIZE	BOTTOM C.Y.	RISER C.Y./FT	TOP C.Y.	EXTENSION C.Y.
3x5	0.279	0.275	0.464	0.724

BOTTOM/TOP/EXTENSION REINFORCEMENT				
SS-2 INLET SIZE	BOTTOM REINFORCEMENT	BOTTOM LB/STEEL	TOP LB/STEEL	EXTENSION LB/STEEL
3x5	#4 @ 9" EW	38.550	116.496	38.305

NOTES: CONCRETE CUBIC YARDS PER INLET + BOTTOM + (TOTAL RISER HEIGHT (FT) x C.Y./FT) + TOP EXTENSION INCLUDES CURB INLET UNIT + TOP + EXTENSIONS- ANY HOLE OPENINGS EXTENSION BLOCKOUT OPENINGS

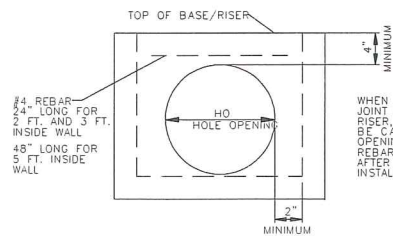
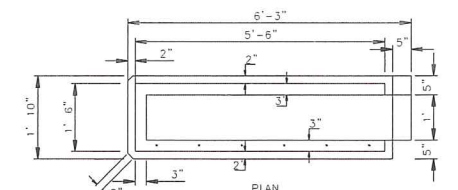
NOTE: *EXTENSION INCLUDES CURB INLET UNIT PLUS TOP

MINIMUM PIPE DEPTH WITHOUT EXTENSION TOP OF CURB UNIT TO PIPE INVERT			
ROUND RCP SIZE	DEPTH INCHES	ARCH RCP SIZE	DEPTH INCHES
12	36	-	-
15	39.5	18x11	32.5
18	42	22x13	34.5
21	44.5	-	-
24	49	29x18	39.5
27	53.5	-	-
30	55	36x23	44.5

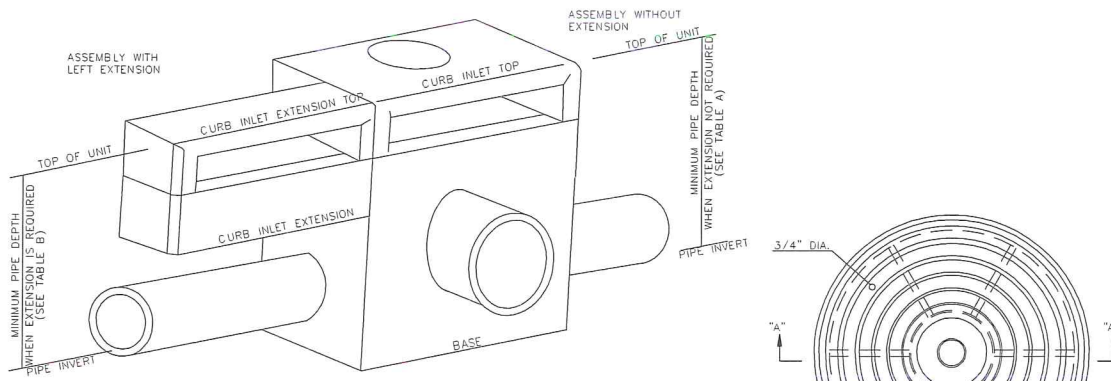
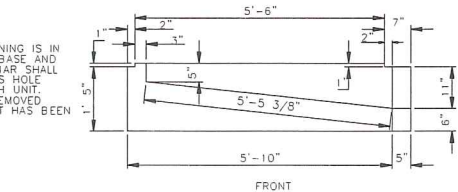
MINIMUM PIPE DEPTH WITH EXTENSION TOP OF CURB UNIT TO PIPE INVERT			
ROUND RCP SIZE	DEPTH INCHES	ARCH RCP SIZE	DEPTH INCHES
12	55	-	-
15	58	18x11	55
18	61	22x13	58
21	64	-	-
24	67	-	-
27	72	-	-
30	-	-	-

NOTE: BLANK SPACES IN TABLES INDICATE PIPE WILL NOT FIT INTO SIDE OF BOX OR PIPE SIZE IS NOT AVAILABLE.

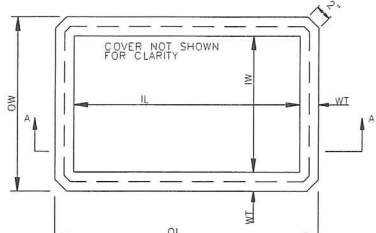
HOLE OPENING									
ROUND RCP SIZE	OPENING			CONCRETE DEDUCTION PER OPENING (C.Y.)	ARCH RCP SIZE	OPENING			CONCRETE DEDUCTION PER OPENING (C.Y.)
	INCHES	HO	OP			INCHES	HO	OP	
12	2	20	4	0.017	-	-	-	-	-
15	2.25	24	4.5	0.032	18x11	2.25	25.5x18.5	1.5	0.015
18	2.5	26	4	0.045	22x13	2.5	30x21	1.5	0.045
21	2.75	28	3.5	0.060	-	-	-	-	-
24	3	32	4	0.076	29x18	3	38x27	1.5	0.073
27	3.25	40	6.5	0.095	-	-	-	-	-
30	3.5	40	5	0.116	36x23	3.5	46x33	1.5	0.108



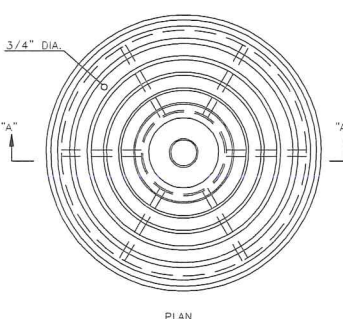
WHEN HOLE OPENING IS IN JOINT BETWEEN BASE AND RISER, A #4 REBAR SHALL BE CAST ACROSS HOLE OPENING IN EACH UNIT. REBAR TO BE REMOVED AFTER EACH UNIT HAS BEEN INSTALLED.



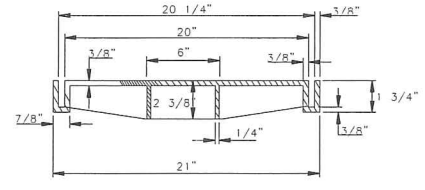
ISOMETRIC VIEW OF PRECAST UNIT



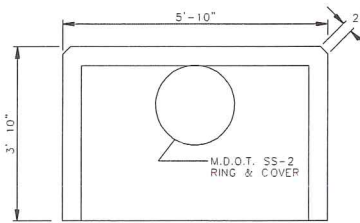
PLAN FOR BASE/RISER INLET/JUNCTION BOX



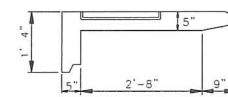
PLAN



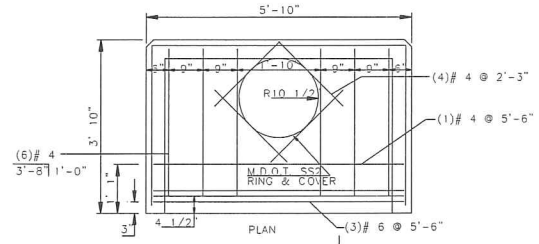
SECTION A-A
M.D.O.T. SS-2 RING AND COVER
79 LBS



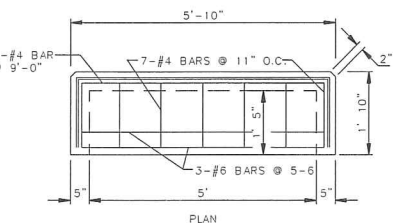
CURB INLET TOP



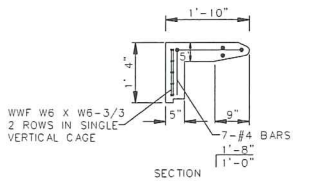
SECTION



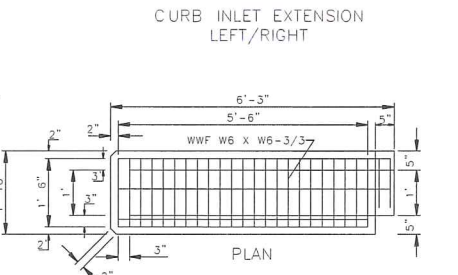
REINFORCEMENT CURB INLET TOP



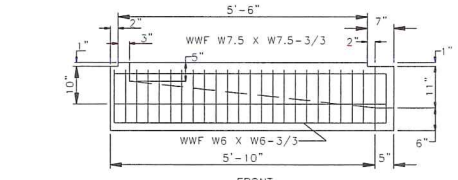
REINFORCEMENT CURB INLET EXTENSION TOP LEFT/RIGHT



SECTION



CURB INLET EXTENSION LEFT/RIGHT



REINFORCEMENT CURB INLET EXTENSION LEFT/RIGHT

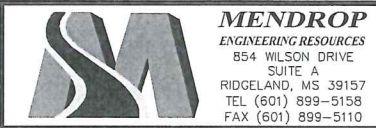
- GENERAL NOTES:
1. CONCRETE SHALL HAVE COMPRESSIVE STRENGTH OF 4000 PSI MINIMUM AT 28 DAYS.
 2. REINFORCING FOR BOTTOM AND WALLS SHALL BE WELDED WIRE FABRIC, ASTM A-185, AND OF THE AREA AS SHOWN IN TABLE.
 3. REINFORCING FOR COVER SHALL BE WITH DEFORMED BARS, ASTM A615/A AND OF THE SIZE AS SHOWN IN TABLE.
 4. JOINT TO BE SEALED WITH PREFORMED JOINT COMPOUND, AASHTO SPECIFICATION M-198.
 5. 2 1/2" LIFTING HOLES TO BE LOCATED ON EACH SIDE OF BOX SECTIONS FOR HANDLING.
 6. GROUT FOR JOINING PIPE TO PRECAST UNITS WILL BE A COMMERCIAL MASONRY GROUT MEETING SPECIFICATIONS.
 7. WHEN INTERIOR RISER UNITS ARE REQUIRED, UNITS SHALL BE MARKED TO IDENTIFY EACH UNIT.

REVISIONS		
NO.	DATE	DESCRIPTION

WENDY'S SITE #12175
NEW BUILD
1243 GLUCKSTADT ROAD
MADISON COUNTY, MISSISSIPPI

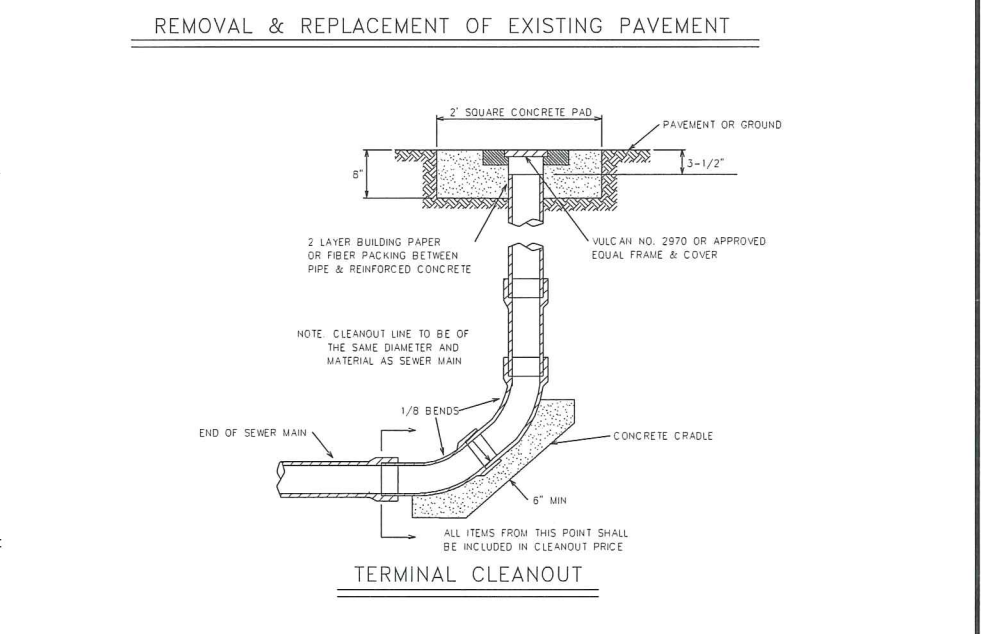
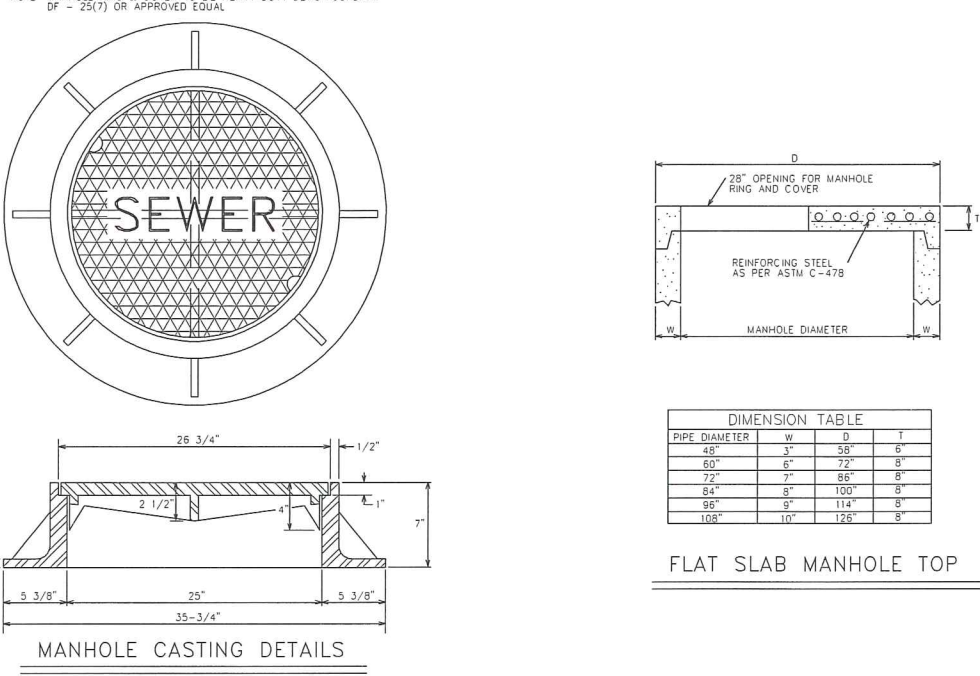
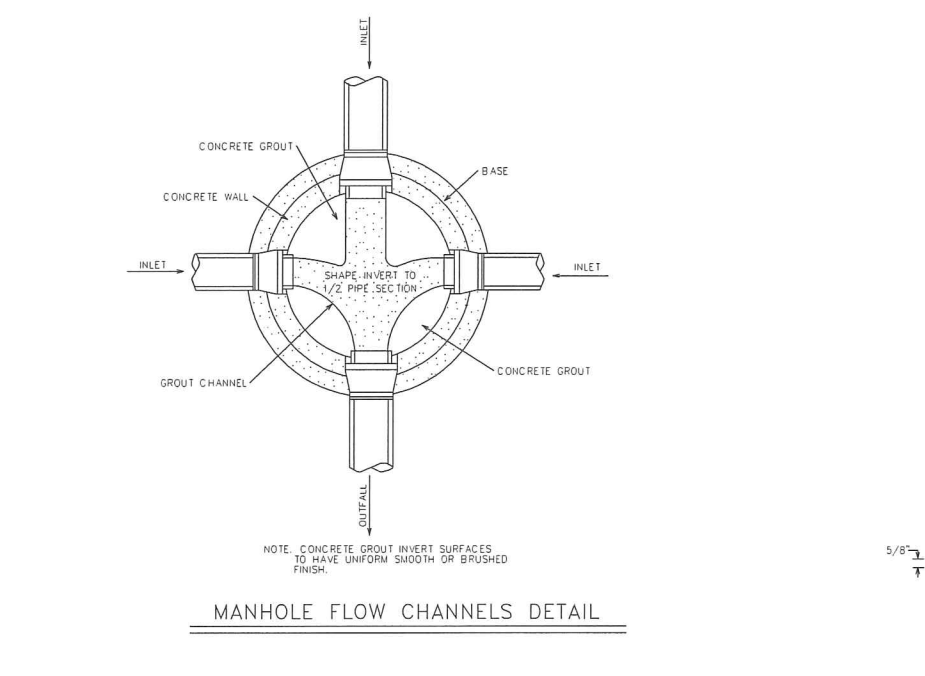
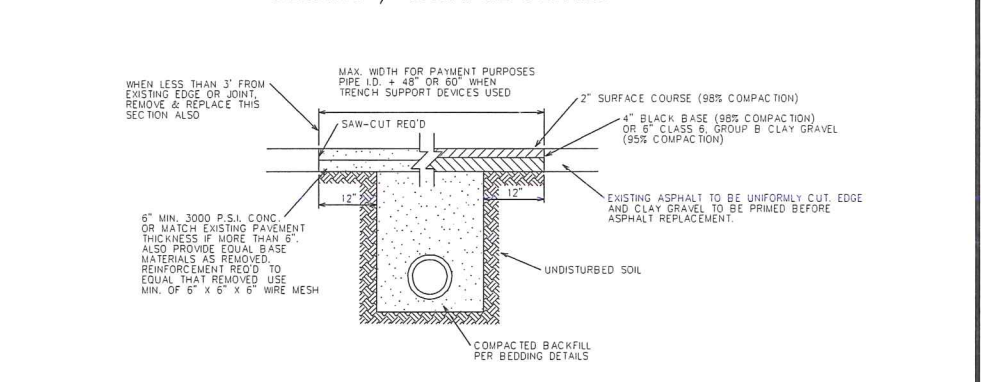
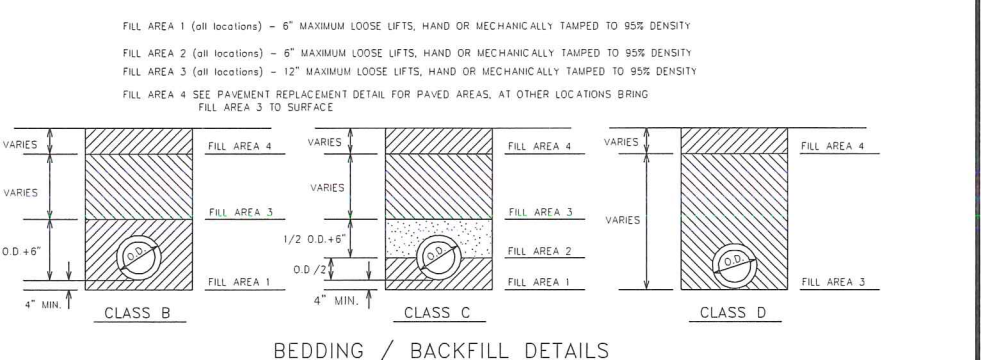
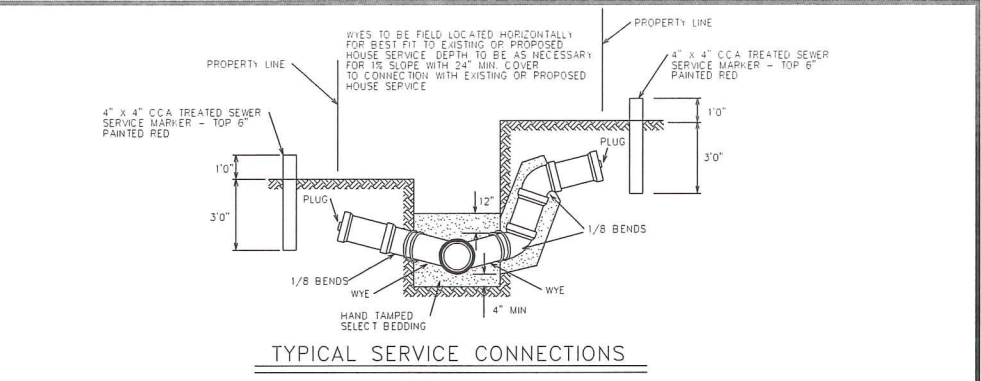
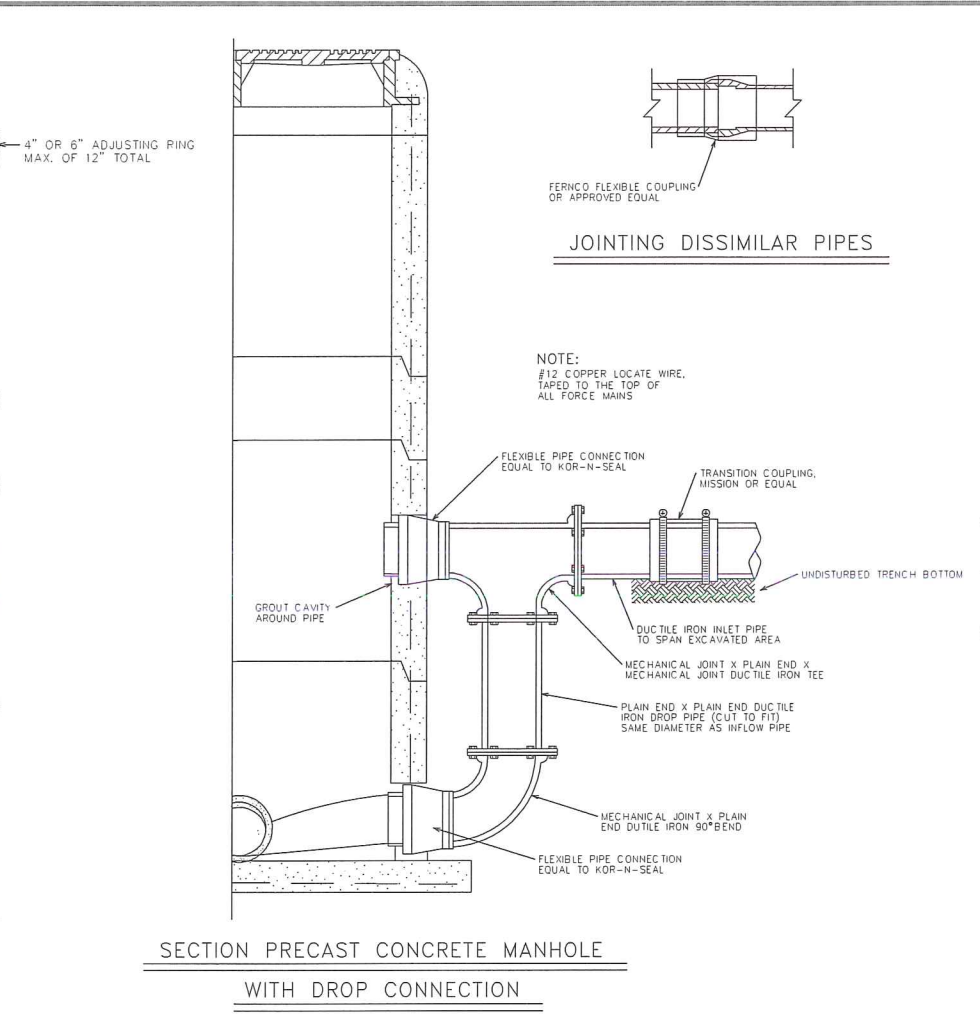
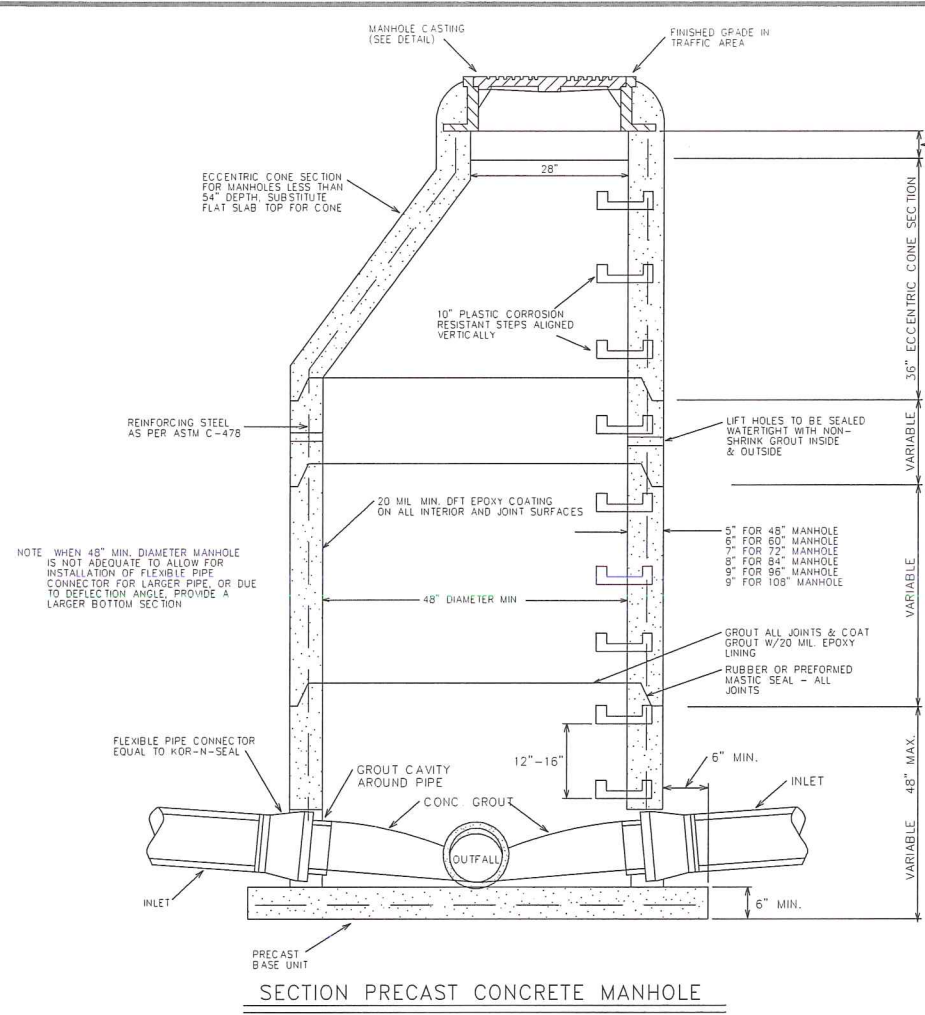
PRE-CAST CURB INLET DETAILS

PATH: I:\Land Projects\C-075-13-17\DWG\C-075-13-17.dwg



DRAWN BY: B. GRIFFIN
CHECK BY: B. MENDROP
SCALE: NONE
DATE: NOVEMBER 2017
PROJECT NO.: C-075-13-17

SHEET NO.
C-3.2



REVISIONS			
NO.	DATE	DESCRIPTION	BY

WENDY'S SITE #12175
 NEW BUILD
 1243 GLUCKSTADT ROAD
 MADISON COUNTY, MISSISSIPPI

TYPICAL SANITARY SEWER DETAILS
 PATH: I:\Land Projects\C-075-13-17\Dwg\C-075-13-17.dwg

MENDROP ENGINEERING RESOURCES
 854 WILSON DRIVE
 SUITE A
 RIDGELAND, MS 39157
 TEL (601) 899-5158
 FAX (601) 899-5110

DRAWN BY: B. GRIFFIN
 CHECK BY: B. MENDROP
 SCALE: NONE
 DATE: NOVEMBER 2017
 PROJECT NO.: C-075-13-17

SHEET NO.
C-3.4

12/21/2017 2:15:04 PM